

Instructions and user manual

# CG2660



**ALNOVA**<sup>®</sup>

Millasur, SL.  
Rúa Eduardo Pondal , nº 23 - Pol. Ind . Sigüeiro  
15688 - Oroso - A Coruña 981 696465 [www.millasur.com](http://www.millasur.com)

EN



**ANOVA** would like to congratulate you for having chosen one of our products and guarantees you the assistance and cooperation that has always distinguished our brand over time.

This machine is designed to last many years and to be of great use if used in accordance with the instructions contained in the user manual. We therefore recommend that you read this instruction manual carefully and follow all our recommendations.

For more information or questions you can contact us through our web supports such as [www.anovamaquinaria.com](http://www.anovamaquinaria.com).

## **INFORMATION ABOUT THIS MANUAL**

Please pay attention to the information provided in this manual and on the appliance for your safety and the safety of others.

- This manual contains instructions for use and maintenance.
- Take this manual with you when you go to work on the machine.
- The contents are correct at the time of printing.
- They reserve the rights to make alterations at any time without affecting our legal responsibilities.
- This manual is considered an integral part of the product and must remain with it in case of loan or resale.
- Ask your dealer for a new manual in case of loss or damage.

## **READ THIS MANUAL CAREFULLY BEFORE USING THE MACHINE**

To ensure that your machine provides the best results, please read the usage and safety regulations carefully before using it.

### **OTHER WARNINGS:**

Incorrect use could cause damage to the machine or other objects. Adaptation of the machine to new technical requirements could cause differences between the content of this manual and the product purchased.

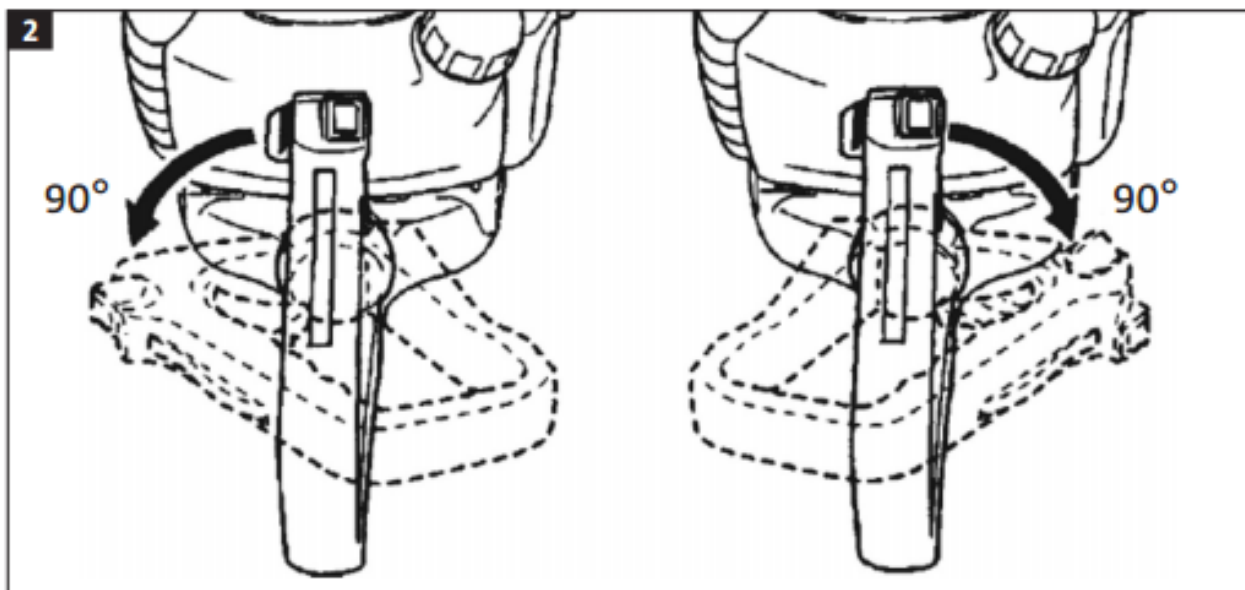
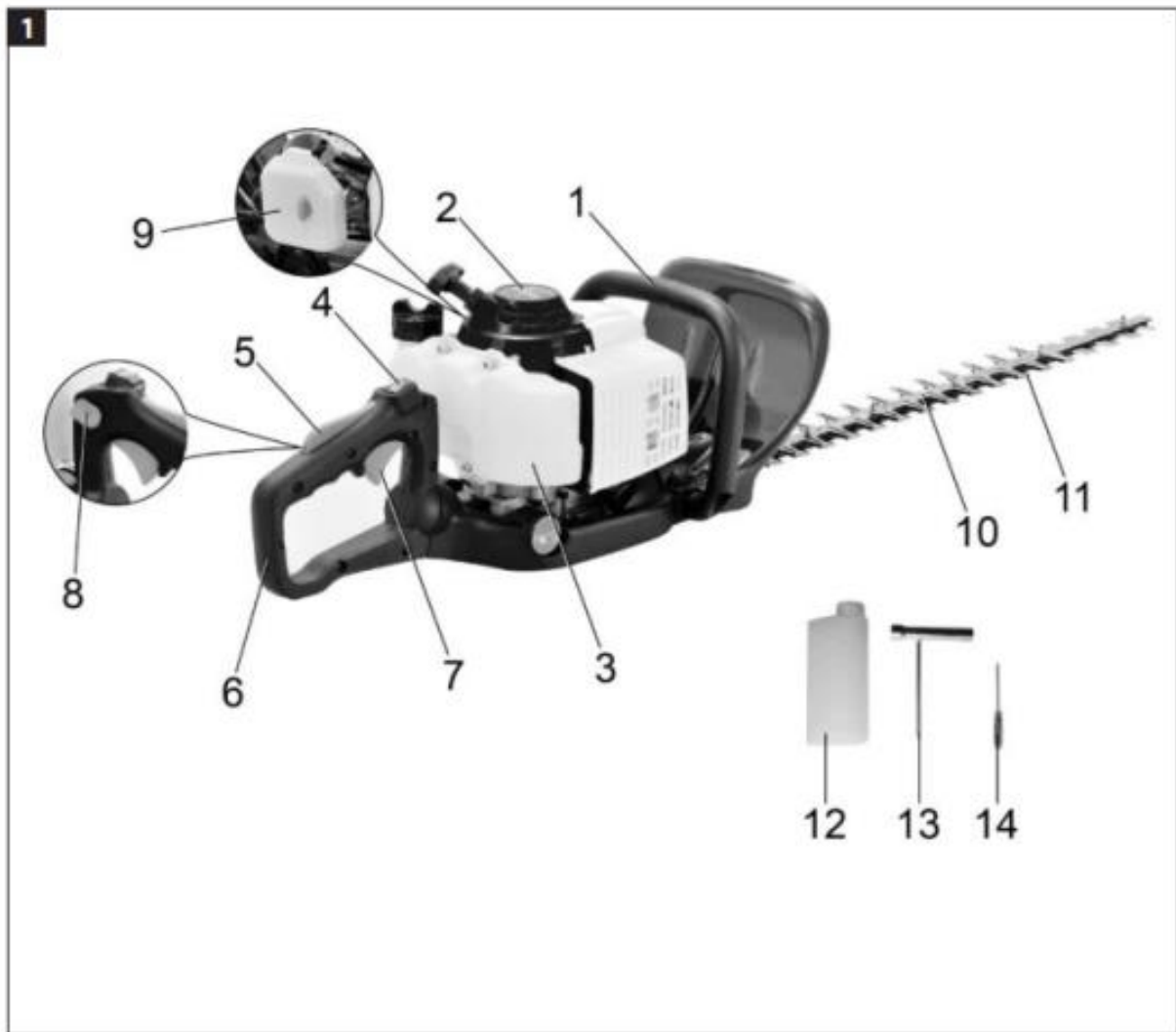
Read and follow all instructions in this manual. Failure to follow these instructions could result in serious personal injury.

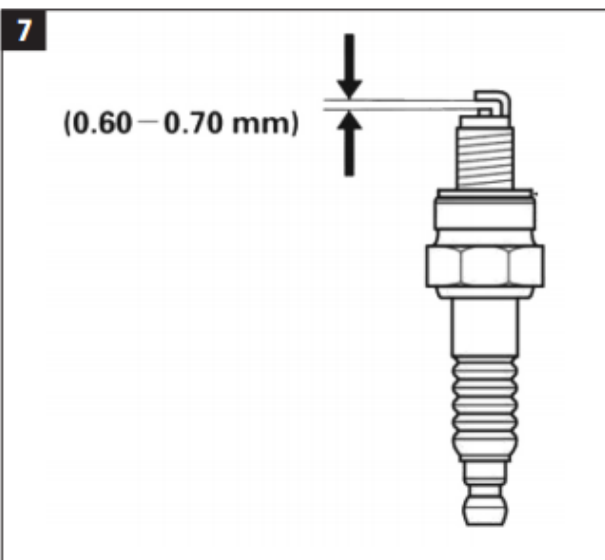
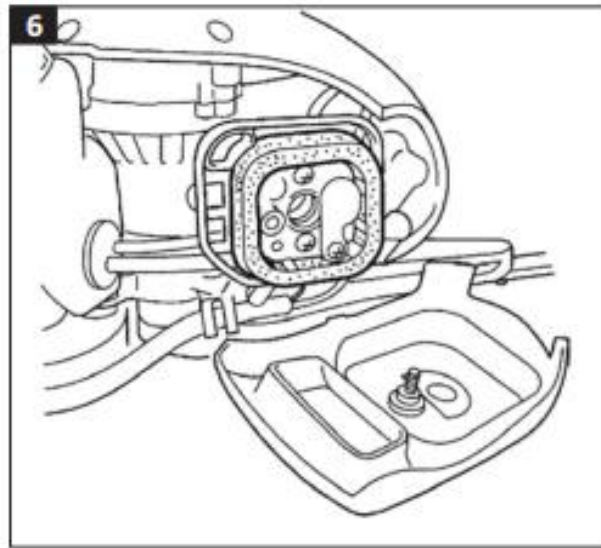
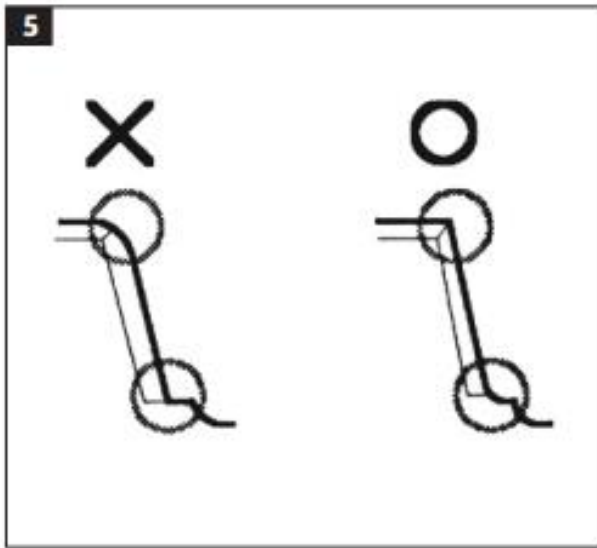
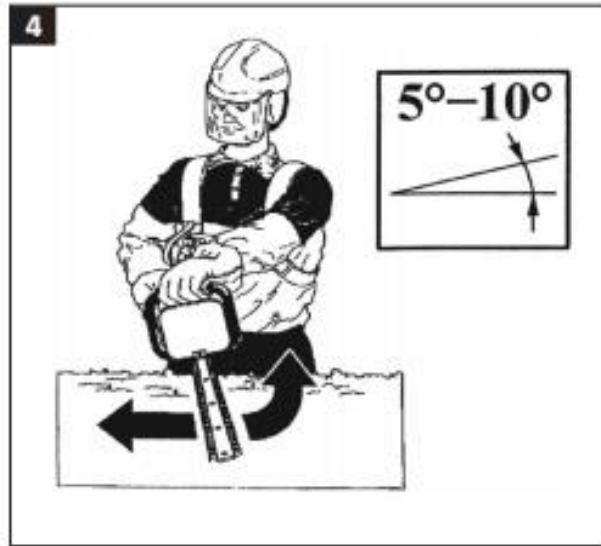
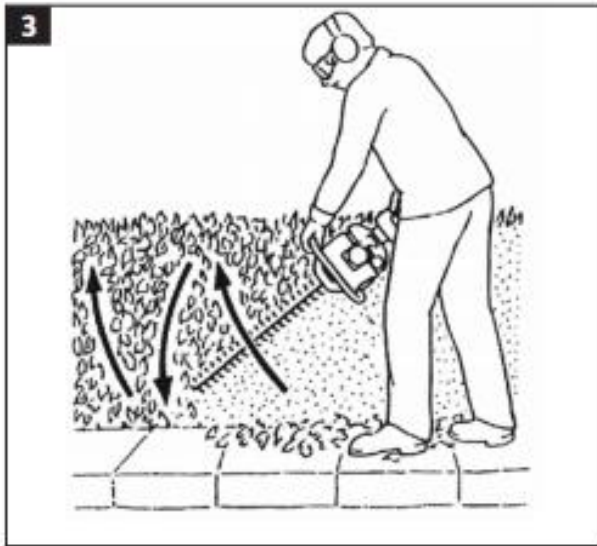
# CONTENT

1. FIGURES
2. SYMBOLS
3. SAFETY INSTRUCTIONS
4. GENERAL INSTRUCTIONS
5. TECHNICAL DATA
6. DESCRIPTION
7. USE
8. MAINTENANCE
9. TROUBLESHOOTING
10. WARRANTY
11. ENVIRONMENT
12. EXPLODED
13. EC DECLARATION

**ALNOVA<sup>®</sup>**

# 1. FIGURES





**ALNOVA**<sup>®</sup>

## 2. SYMBOLS

	WARNING
	READ THE INSTRUCTIONS BEFORE USING
	WEAR PROTECTIVE GLASSES
	WEAR APPROPRIATE HEARING PROTECTION.
	WEAR PROTECTIVE HELMET
	USE SAFETY GLOVE
	WEAR PROTECTIVE FOOTWEAR
	DANGER OF BURNS ON HOT SURFACES.
	FIRE DANGER
	CE APPROVAL ACCORDING TO CURRENT REGULATIONS



PROTECT THE MACHINE FROM MOISTURE

SMOKING OR HANDLING FIRE NEAR THE MACHINE IS PROHIBITED.

DISPOSE OF THE PRODUCT ACCORDING TO LOCAL RECYCLING REGULATIONS

### 3. SAFETY INSTRUCTIONS

- The equipment must only be used for its intended use, and in accordance with these instructions.
- The manufacturer /distributor will not assume any responsibility for personal injury or property damage resulting from incorrect use of the machine. Read all instructions and safety instructions carefully before use. Failure to follow all directions for use and safety instructions may lead to the risk of material damage and/or serious personal injury. • Do not use the machine if its corresponding parts, guards and covers are missing or damaged - risk of serious personal injury . Contact your dealer if any part of the machine is missing or damaged.

### 4. GENERAL INSTRUCTIONS

- Read these instructions carefully before use, and become familiar with the machine's controls and how they are used.
- Never allow children, or anyone unfamiliar with the machine and these instructions, to use it. There may be local regulations for the minimum age of persons authorized to use the machine.
- Do not use the machine when other people, especially children, or pets are near the machine when it is in use.
- The user is responsible for any accidents or risks to other people or property.
- Major repairs should only be carried out by qualified personnel.

#### 4.1 BEFORE USE

- Avoid cutting near power lines.
- Wear appropriate clothing. Do not wear loose clothing or jewelry. It can get caught in moving parts of the machine. Wear gloves, non-slip shoes and safety glasses.
- Use extra care when handling fuel. It is highly flammable and the fumes are explosive.

Follow these instructions:

- Only use an approved fuel tank.
- Never remove the fuel tank cap or refuel with gasoline when the engine is running. Let the engine, exhaust and components cool before refueling.
- Do not smoke when refueling or while cutting.
- Never recharge inside closed or unventilated rooms.
- Never store the machine or fuel tank indoors where there are ignition sources such as a boiler, water heater , dryer or electric motors that could emit sparks, to avoid the risk of ignition.
- Do not start the machine if fuel has been spilled. Move the machine away from any fuel spills before starting. Be careful not to ignite on spilled gasoline.
- Always replace and tighten the fuel cap after refueling.

- If the cutting mechanism collides with a foreign object, or if the machine begins to vibrate or make an abnormal noise, turn off the engine and wait until all moving parts have completely stopped . Release the spark plug wire and follow the instructions below:

- Check the machine for damage.
- Check and tighten loose parts.
- Repair any damaged parts or replace them with original spare parts.
- The maximum operation allowed depending on temperature and humidity are:

- Maximum operating temperature: 40 ° C.
- Maximum humidity: 95%.

## 4.2 USE

### WARNING!

Never use the machine for anything other than its intended purpose.

- Turn off the engine:
  - before removing a blockage in the comb.
  - before checking, cleaning or doing any other work on the machine.
  - before changing the position of the cutting mechanism.
  - before leaving the machine unattended.
- Always place the machine in the correct working position before starting.
- Always maintain a firm base and good balance . Be careful when working on ladders or scaffolding, etc.
- Do not use the machine if the cutter or mechanism is damaged or worn.
- Keep the engine and exhaust free of debris, leaves and lubricant buildup – risk of fire.
- Never use the machine if it has a handle or if the covers are dismantled or damaged. Do not use the machine if any parts, guards and covers are missing or damaged - risk of serious personal injury. Never attempt to modify the machine.
- Machines that have two handles should always be operated with both hands.
- Risk of kickback

## 4.3 RISK OF REBOUND

- Kickback can occur suddenly if the blades become stuck, blocked, or incorrectly adjusted. If this happens, the blades will stop automatically, which in turn forces the machine in the opposite direction to the movement of the blades.
- If, for example, a blade gets stuck against

a stone, the edge of the blade can grab the material and the bar will push in the opposite direction of the working direction.

The bar can

be thrown away from the user, depending on the direction of the working movement.

- Kickback occurs during incorrect use of the machine and/or incorrect work methods or working conditions, but can be avoided by taking the following measures:

- Hold the machine firmly with both hands and keep your arms in a position that prevents kickback.
- Never put your hands near the cutting comb - risk of personal injury due to counter impact.
- Stand to the side of the machine without any part of your body in line with the movement of the blades - risk of personal injury due to kickback.
- Be very careful around curves, corners and edges, etc. There is more risk of the machine blocking or getting stuck, which can cause kickback.

## 4.4 MAINTENANCE AND STORAGE

- Turn off the machine and release the spark plug wire before checking, adjusting, or doing any maintenance or changing accessories on the machine. Allow the machine to cool before checking, adjusting, or storing the machine.
- Store the machine where fuel vapor cannot come into contact with flames or sparks. Always allow the machine to cool before storing
- Replace damaged or worn parts .
- If the fuel tank needs to be emptied, do this in a clear, outside location.
- Clean and carry out necessary maintenance on the machine before storing it.
- Never dismantle the cutting guard.
- Store the bar and blades in a cool, dry place. Do not use the machine if the bar or blades are rusted or damaged - risk of serious personal injury.



## 5. TECHNICAL DATA

TYPE OF MOTOR	2 stroke - air ventilated
DISPLACEMENT	25.4cc _
POWER	0.65 kW
MAX RPM	11,500/min
IDLE RPM	7,500/min
COMB LENGTH	780mm
CUTTING LENGTH	600mm
FUEL MIXTURE	40:1
FUEL CAPACITY	0.6L
SOUND PRESSURE LEVEL	LpA99.6 dB(A), K=3dB(A)
SOUND POWER LEVEL	LwA 104.7 dB(A), K=3dB(A)

### WARNING!

The actual vibration level when using the tool may vary from the specified value, depending on how the tool is used. It will therefore be necessary to determine what level of safety and what precautions are required to protect the user, based on an estimate of real-time exposure to operating conditions (taking into account all stages of the work cycle, e.g. the time when the tool is off or idling, in addition to the start-up time).

## 6. DESCRIPTION

1. Front handle  
2. Beginning of cord  
3. Fuel tank  
4. Engine switch  
5. Catch the throttle lever  
6. Rear handle  
7. Throttle control  
8. Capture to grab the rear handle  
9. Air filter  
10. Bar  
11. Knife  
12. Container for mixing fuel  
13. Spark plug wrench  
14. Screwdriver

see FIG1

## 7. USE

### 7.1. Expected use

The hedge trimmer is intended for cutting and pruning shrubs and ornamental plants in private gardens.

### 7.2. Before using

- Inspect the work area before beginning cutting or pruning.
- Remove rocks, metal objects and other solid objects that may be thrown during work.
- When working close to the ground, be careful to avoid rubbing sand, gravel or stones between the blades.
- Make sure that the cutting mechanism cannot come into contact with any foreign object or object harmful to the operation of the machine.

### 7.3. Fuel

1. Start the engine by moving the switch to position 0.
2. Unscrew the fuel cap and check the fuel level.
3. Fill with unleaded gasoline mixed with 2T oil.  
Make sure the fuel is well mixed. Do not fill the tank to the top, leave some space for the fuel to expand.
4. Tighten the fuel cap clockwise.

Change the type of gasoline if the engine runs intermittently at constant speed and normal load. Contact an authorized service center if the problem persists, otherwise the engine may be damaged. Higher octane gasoline is recommended for continuous work at high speed.

### NOTE:

- The hedge trimmer has a 2-stroke engine, which requires fuel premixed with gasoline and 2-stroke oil. The mixing ratio is 40:1 - 40 parts unleaded gasoline to 1 part two-stroke oil.
- Make sure there is good lighting when refueling. Avoid fuel spills.
- Turn off the engine and let it cool for 2 minutes before refueling.

- Only refuel with fuel in a well-ventilated area, at a safe distance from any fire source or equipment that may produce sparks and other sources of heat.
- Never remove the fuel cap or add fuel while the engine is running. Let the engine cool before refueling.
- Check that fuel is not flowing through the exhaust pipe.
- Never use 4-stroke oil or 2-stroke water-cooled type oil.

## 7.4. Adjust the handlebar

1. The rear handlebar can be adjusted to three positions:  
0° / 90° left / 90° right.
2. Press the handlebar tilt detent and rotate the rear handlebar until the pin engages with a clicking sound.
3. Work can be resumed when the back of the handlebar is locked in the new position.

see FIG2

### **WARNING!**

Do not press the accelerator when adjusting the handlebar angle.

## 7.5. Hand guard

The hand guard prevents hands from coming into contact with the moving blades, for example if the user loses grip on the front handle.

### **NOTE:**

- Verify that the hand guard is properly adjusted.
- Check that the hand guard is not damaged

## 7.6. To start the engine

1. Press the primer cylinder several times until fuel can be seen in the bulb.
2. Turn the engine switch to the ON position.
3. Place the choke in the START position to start if the engine is cold. Do not use the choke to start the engine when it is hot.
4. The choke closes in the START

position. 5. Pull the starter cable slowly until it latches, and then pull quickly. Let the starter handle return to its original position slowly. Support it with your hand to avoid damaging the starter. The first time the engine starts it will take several attempts to begin getting fuel from the tank to the engine.

6. Move the choke to the RUN position when the engine has started.

7. Keep the engine running for half a minute to warm it up.

Choke Starting Position:



Choke Running Position:



## 7.7. engine shutdown

1. Allow the hedge trimmer to idle for a few minutes.
2. Turn off the engine by moving the switch to position 0.
3. The blades will continue to move for a few seconds after the engine turns off. Wait until all moving parts have come to a complete stop before leaving the hedge trimmer.

## 7.8. Court

- Do not work at low revolutions. Prolonged use at low rpm will cause unnecessary wear on the clutch.
- Do not run the engine at full speed except when cutting. Prolonged use at maximum speed may reduce motor life.
- Use the accelerator to adjust the speed.
- When trimming hedges, the motor should always be positioned as far away from the hedge as possible.
- Keep the hedge trimmer as close to your body as possible for better balance.
- Be careful not to let the tip of the bar touch the ground or other solid objects.

### **WARNING!**

- In an emergency situation, turn off the engine by moving the engine switch to position (0).
- Turn off the hedge trimmer immediately in case of problems or malfunctions. Contact your dealer if you have problems or doubts in operation.
- Never use the hedge trimmer if it is not working properly.
- Check that the cutting

mechanism does not move when the engine is idling .

## 7.9. vertical cut

1. Start by cutting the sides of the hedge, making a vertical cut.
2. Cut with a rocking motion up and then down, so that the blades on both sides of the bar cut.
3. Don't work too fast, especially if it is a thick hedge. Work at a constant speed until all branches are the desired length.
4. Turn off the engine immediately if the blades get stuck during work. Wait until all moving parts have come to a complete stop, release the spark plug wire and remove the lock.

see FIG3

## 7.10. Horizontal cut

For best results, tilt the bar slightly (5°-10°) toward the cutting direction. Be very careful when cutting tall hedges. Look at the opposite side of the coverage before starting work.

see FIG4

## 8. MAINTENANCE

NOTE:

Always turn off the engine and release the spark plug wire from the spark plug before any maintenance.

### 8.1 Blades

- Correcting the contact distance between the fixed and moving parts of the blades is essential for good cutting results. Adjust the contact pressure by turning the screws at the bottom of the bar clockwise.
- When adjusted correctly the gap between the blades should be between 0.6 mm.
- Replace blades if they are bent or damaged.

Check the edges and sharpen them if necessary with a flat file and a round file:

1. Keep the ends sharp. The best edge

angle is 45°.

2. Round the base of the cutting edge.
3. Do not use water when you are sharpening the blades.

see FIG5

### 8.2. Air filter

Check that the air filter is clean and in good condition .

1. Loosen the screw securing the cover over the air filter.
2. Remove the cover and check the air filter.
3. Clean the air filter with water and wash the surface, or with a nonflammable solvent.
4. Let the air filter dry.
5. Replace the air filter.
6. Replace the cover over the air filter and tighten the retaining screw .

see FIG6

#### **WARNING!**

- Do not clean the air filter with gasoline or flammable solvent - risk of fire and/or explosion.
- Only use water and liquid detergent, or nonflammable solvent, to clean the hedge trimmer .
- Never use the hedge trimmer without the air filter.

### 8.3. Spark plug

The spark plug must be clean and have the correct electrode gap for the engine to operate properly.

1. Remove the spark plug cap.
2. Remove the cover.
3. Remove any dirt from the base of the spark plug.
4. Unscrew the spark plug with the wrench provided.
5. Check the spark plug. Remove any deposits on the spark plug.
6. Check if the tip of the spark plug is discolored . The normal color is light brown.
7. Check electrode clearance. It should be 0.6-0.7 mm.

see FIG7

8. Carefully screw the spark plug in by hand.
9. When it seats, tighten the spark plug with the wrench.
10. Put the cover again.
11. Replace the spark plug cap.

### 8.4. Grease the gearbox

Lubricate the gearbox every 10 to 20 hours of operation. Place the grease gun on the appropriate grease fitting. Press some grease to lubricate the gearbox.

### 8.5. Cleaning

- Clean the hedge trimmer with a cloth. Do not rinse the hedge trimmer with water, this may damage the internal parts.
- Do not use strong detergents or solvents containing benzene, trichloroethylene, chloride or ammonia. This may damage the plastic parts.
- Keep the ventilation openings on the hedge trimmer clean to prevent the engine from overheating. Cleaning with a soft brush and compressed air usually produces a satisfactory result.
- Wear safety glasses when cleaning.
- Remove any plant residue on the blades after each use.
- Lubricate the bar with an anti-rust lubricant after cutting.

### 8.6. Transport

Use the original or other appropriate

PART	ACTION	BEFORE USE	1 MONTH / 25 HOURS	3 MONTHS / 50 HOURS	6 MONTHS / 100 HOURS
Air filter	Clean			x (1)	
Spark plug electrode	Clean				X (2)
Fuel tank and filter	Clean				X (2)
Gear grease	Check and fill			x (1)	
Blades	Check and change if necessary	x		x	
fuel tube	Check and change if necessary	3 YEARS (2)			

(1) Increase the frequency of the action if working in dusty or heavily dirty conditions.

(2) Action to be carried out in an authorized center by a technician.

- packaging with appropriate protection during transport. Empty the fuel tank before carrying the hedge trimmer in a vehicle to avoid the risk of leaks.
1. Place the hedge trimmer on a stable, level surface.
  2. Remove the fuel cap.
  3. Empty the fuel into a suitable container adapted for this purpose.
  4. Press the primer cylinder several times until fuel can be seen in the bulb.
  5. Empty the tank again.
  6. Replace the fuel cap.

### 8.7. Storage

Store the hedge trimmer, instructions and any accessories in the original packaging. This way you will always have all the information and all the parts easily accessible. Store the hedge trimmer with the fuel tank empty in a dry, well-ventilated area. Do not store the engine with fuel in the tank.

### 8.8. Repairs

Repairs should only be performed by an authorized service center.

### 8.9. Maintenance program

Maintenance must be carried out after the specified interval or the number of working hours (whichever comes first) according to the table below.

## 9. TROUBLESHOOTING

Problem	probable cause	Required action
The engine stops, is difficult or impossible to start	Clogged air filter	Clean or replace
	Clogged fuel tube	Clean or replace
	carburetor failure	Contact your point of sale
	Fuel mixture too rich in gas	Adjust the carburetor
	Switch off	Put the switch in position I
	electrical failure	Contact your point of sale
	Spark plug electrode with incorrect gap	Set it to 0.6-0.7mm
	Dirty spark plug electrode	Clean or replace the spark plug
	Defective spark plug	Replace the spark plug
The motor starts, but stops or does not reach working speed	Fuel with impurities	Empty the old fuel and refuel with new fuel.
	Vibrations	Adjust comb pressure
	Prolonged use in extremely dirty conditions	Clean the machine
The engine will not start	Internal engine failure	Contact your point of sale

## 10. WARRANTY

This product is guaranteed in accordance with current regulations for a period of 24 months from the date of purchase by the first user.

This warranty covers all material or production defects; does not include defects in normal parts due to wear, such as bearings, brushes, cables, plugs or accessories such as combs, drills, bits, saw blades, etc.; damage or defects resulting from misuse; nor accidents or alterations in the machine; nor the transportation costs for its repair.

We reserve the right to reject any claim where the purchase cannot be verified or where it is clear that the product was not properly maintained. (Ventilation slots cleaned, carbon brushes regularly maintained...)

Your purchase invoice should be kept as proof of the purchase date.

For returns, your machine must be returned to your dealer in acceptable, clean condition, in its original, non-defective box and accompanied by your proof of purchase.

## 11. ENVIRONMENT

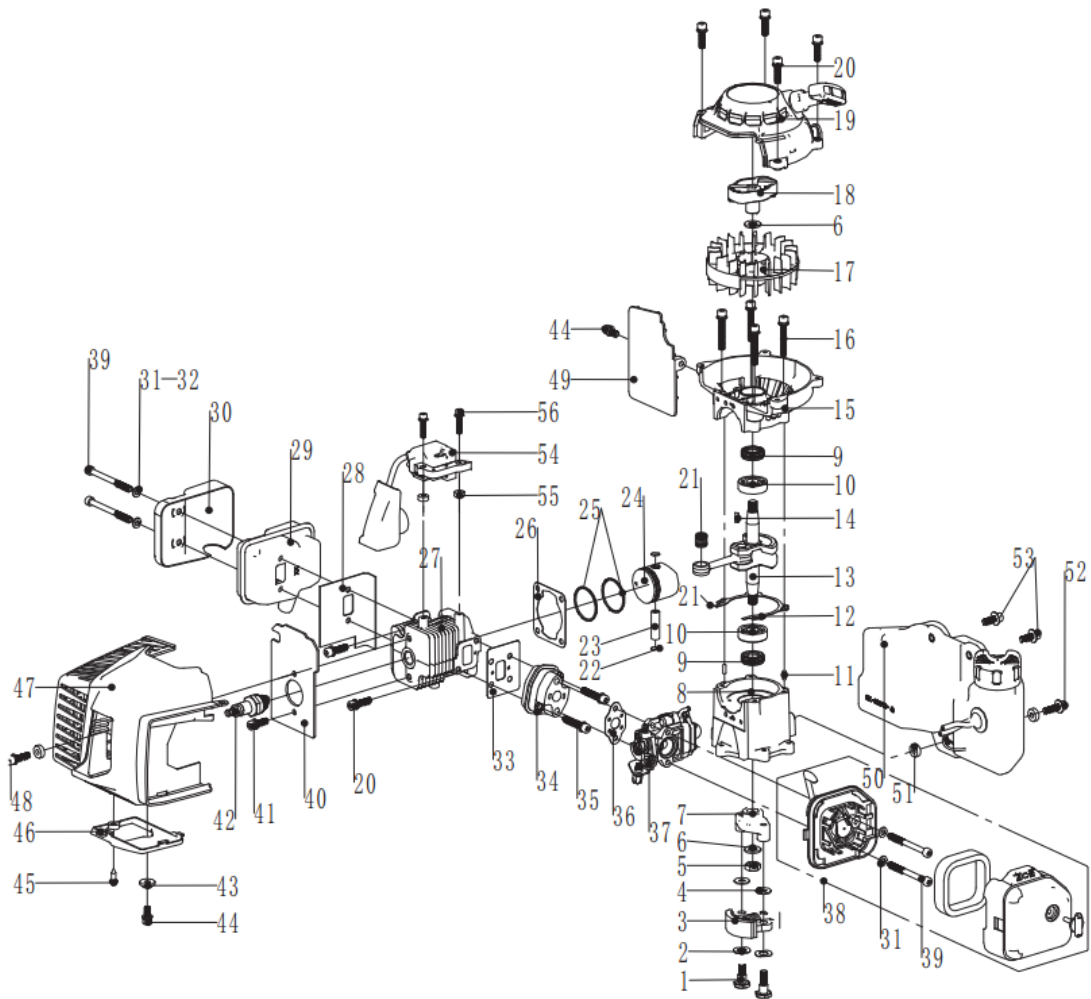
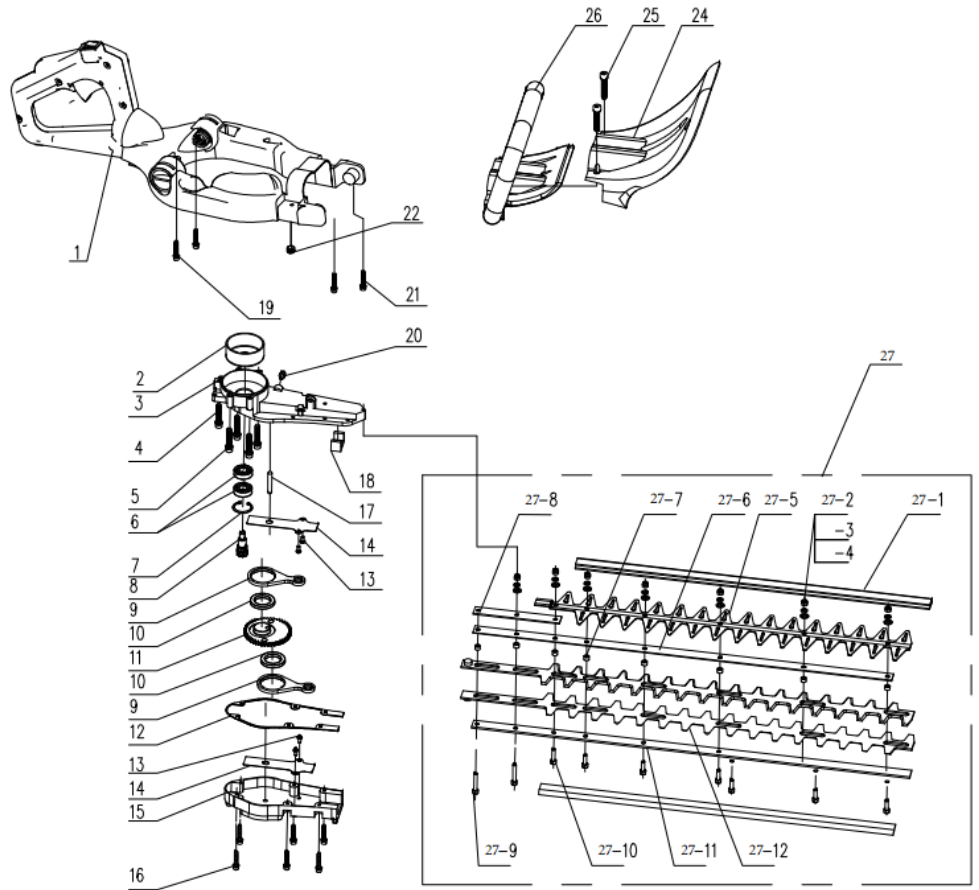
If your machine needs to be disposed of, do not dispose of it in regular trash, consult local regulations in this case and dispose of the product in an environmentally safe and respectful manner.



# 12. EXPLODED

**ALNOVA**

**CG2660**



# 13. CE DECLARATION OF CONFORMITY



## DISTRIBUTION COMPANY

MILLASUR, SL  
RUA EDUARDO PONDAL, Nº 23 PISIGÜEIRO  
15688 OROSO - A CORUÑA  
SPAIN



## EC DECLARATION OF CONFORMITY

In compliance with the different CE directives, it is hereby confirmed that, due to its design and construction, and according to the CE mark printed by the manufacturer on it, the machine identified in this document complies with the relevant and fundamental health and safety requirements. of the aforementioned EC directives. This declaration validates the product to display the CE symbol.

In the event that the machine is modified and this modification is not approved by the manufacturer and communicated to the distributor, this declaration will lose its value and validity.

Machine name: **HEDGE TRIMMER**

Model: **CG2660**

Recognized and approved standard to which it complies:

**Directive 2006/42/EC**

Tested according to:

**EN ISO 10517:2009+A1:2013**

Sello de empresa

**millasur**  
Rúa Eduardo Pondal, nº 23  
Pol. Ind. Sigüeiro - 15688 Oroso - A Coruña  
Tif. 981 696465 / Fax. 981 690861

14/10/2017